

POTTER'S

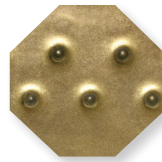
choice

Tiles are AMACO 46-M Buff Stoneware Clay.
Fired to Cone 5.

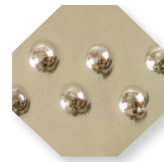
for a reduction look



PC-1 Saturation Metallic



PC-2 Saturation Gold



PC-4 Palladium



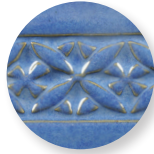
PC-12 Blue Midnight



PC-20 Blue Rutile



PC-21 Arctic Blue



PC-23 Indigo Float



PC-24 Sapphire Float



PC-25 Textured Turquoise



PC-27 Tourmaline



PC-28 Frosted Turquoise



PC-29 Deep Olive Speckle



PC-30 Temmoku



PC-31 Oatmeal



PC-32 Albany Slip Brown



PC-33 Iron Lustre



PC-34 Light Sepia



PC-35 Oil Spot



PC-36 Ironstone



PC-37 Smoked Sienna



PC-38 Iron Yellow



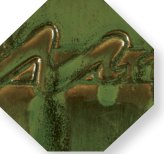
PC-39 Umber Float



PC-40 True Celadon



PC-41 Vert Lustre



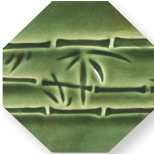
PC-42 Seaweed



PC-43 Toasted Sage



PC-44 Sage



PC-45 Dark Green



PC-46 Lustrous Jade



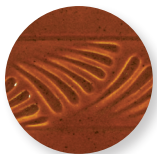
PC-48 Art Deco Green



PC-49 Frosted Melon



PC-50 Shino



PC-52 Deep Sienna Speckle



PC-53 Ancient Jasper



PC-55 Chun Plum



PC-56 Ancient Copper



PC-57 Smokey Merlot



PC-59 Deep Firebrick



PC-60 Salt Buff



PC-61 Textured Amber



PC-62 Textured Amber Brown



PC-63 Cosmic Tea Dust



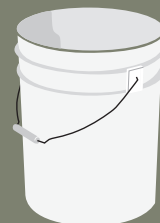
PC-64 Aventurine



* Except PC-4 Palladium and PC-64 Aventurine



** All AP glazes are safe for spray application except PC-29 Deep Olive Speckle, PC-52 Deep Sienna Speckle, PC-59 Deep Firebrick, and PC-63 Cosmic Tea Dust



Most Colors Available in

**25LB
DIPPING
BUCKETS**