



Stoneware Combo

SW-113 SPECKLED PLUM



SW-113
Speckled Plum

CONE 6

Technique was achieved by brushing on two (2) layers of base glaze (SW-113 Speckled Plum).
Then apply two (2) layers of top glaze, letting glazes dry between coats.



SW-105
Frost Blue

SW-105 Frost Blue
over
SW-113 Speckled Plum



SW-108
Green Tea

SW-108 Green Tea
over
SW-113 Speckled Plum



SW-110
Oyster

SW-110 Oyster
over
SW-113 Speckled Plum



SW-118
Sea Salt

SW-118 Sea Salt
over
SW-113 Speckled Plum



SW-134
Eggplant

SW-134 Eggplant
over
SW-113 Speckled Plum



SW-143
Abalone

SW-143 Abalone
over
SW-113 Speckled Plum



SW-145
Tea Dust

SW-145 Tea Dust
over
SW-113 Speckled Plum



SW-168
Coral Sands

SW-168 Coral Sands
over
SW-113 Speckled Plum



SW-179
Muddy Waters

SW-179 Muddy Waters
over
SW-113 Speckled Plum



SW-180
Desert Dusk

SW-180 Desert Dusk
over
SW-113 Speckled Plum



SW-181
Night Moth

SW-181 Night Moth
over
SW-113 Speckled Plum



SW-212
Peacock

SW-212 Peacock
over
SW-113 Speckled Plum



Vases shown are fired to Cone 6 on White Stoneware body.

MaycoColors.com





Stoneware Combo

SW-113 SPECKLED PLUM



SW-113
Speckled Plum

CONE 10

Technique was achieved by brushing on two (2) layers of base glaze (SW-113 Speckled Plum).
Then apply two (2) layers of top glaze, letting glazes dry between coats.



SW-105
Frost Blue

SW-105 Frost Blue
over
SW-113 Speckled Plum



SW-108
Green Tea

SW-108 Green Tea
over
SW-113 Speckled Plum



SW-110
Oyster

SW-110 Oyster
over
SW-113 Speckled Plum



SW-118
Sea Salt

SW-118 Sea Salt
over
SW-113 Speckled Plum



SW-134
Eggplant

SW-134 Eggplant
over
SW-113 Speckled Plum



SW-143
Abalone

SW-143 Abalone
over
SW-113 Speckled Plum



SW-145
Tea Dust

SW-145 Tea Dust
over
SW-113 Speckled Plum



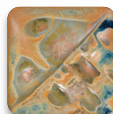
SW-168
Coral Sands

SW-168 Coral Sands
over
SW-113 Speckled Plum



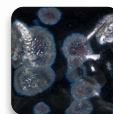
SW-179
Muddy Waters

SW-179 Muddy Waters
over
SW-113 Speckled Plum



SW-180
Desert Dusk

SW-180 Desert Dusk
over
SW-113 Speckled Plum



SW-181
Night Moth

SW-181 Night Moth
over
SW-113 Speckled Plum



SW-212
Peacock

SW-212 Peacock
over
SW-113 Speckled Plum



Vases shown are fired to Cone 10 on White Stoneware body.

MaycoColors.com

