



Stoneware Combo

SW-509 DARK GREEN GLOSS



SW-509
Dark Green Gloss

CONE 6

Technique was achieved by brushing on two (2) layers of base glaze.
Then apply two (2) layers of top glaze (SW-509 Dark Green Gloss), letting glazes dry between coats.




SW-116
Robin's Egg

SW-509 Dark Green Gloss
over
SW-116 Robin's Egg




SW-146
Aurora Green

SW-509 Dark Green Gloss
over
SW-146 Aurora Green




SW-148
Lime Shower

SW-509 Dark Green Gloss
over
SW-148 Lime Shower




SW-150
Celadon Bloom

SW-509 Dark Green Gloss
over
SW-150 Celadon Bloom




SW-153
Indigo Rain

SW-509 Dark Green Gloss
over
SW-153 Indigo Rain




SW-155
Winter Wood

SW-509 Dark Green Gloss
over
SW-155 Winter Wood




SW-156
Galaxy

SW-509 Dark Green Gloss
over
SW-156 Galaxy




SW-176
Sandstone

SW-509 Dark Green Gloss
over
SW-176 Sandstone




SW-179
Muddy Waters

SW-509 Dark Green Gloss
over
SW-179 Muddy Waters




SW-180
Desert Dusk

SW-509 Dark Green Gloss
over
SW-180 Desert Dusk




SW-181
Night Moth

SW-509 Dark Green Gloss
over
SW-181 Night Moth




SW-401
Light Flux
*shown above over
SW-119 Cinnabar

SW-509 Dark Green Gloss
over
SW-401 Light Flux



Vases shown are fired to Cone 6 on White Stoneware body.

MaycoColors.com





Stoneware Combo



SW-509
Dark Green Gloss

SW-509 DARK GREEN GLOSS

CONE 10

Technique was achieved by brushing on two (2) layers of base glaze.
Then apply two (2) layers of top glaze (SW-509 Dark Green Gloss), letting glazes dry between coats.



SW-116
Robin's Egg

SW-509 Dark Green Gloss
over
SW-116 Robin's Egg



SW-146
Aurora Green

SW-509 Dark Green Gloss
over
SW-146 Aurora Green



SW-148
Lime Shower

SW-509 Dark Green Gloss
over
SW-148 Lime Shower



SW-150
Celadon Bloom

SW-509 Dark Green Gloss
over
SW-150 Celadon Bloom



SW-153
Indigo Rain

SW-509 Dark Green Gloss
over
SW-153 Indigo Rain



SW-155
Winter Wood

SW-509 Dark Green Gloss
over
SW-155 Winter Wood



SW-156
Galaxy

SW-509 Dark Green Gloss
over
SW-156 Galaxy



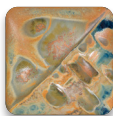
SW-176
Sandstone

SW-509 Dark Green Gloss
over
SW-176 Sandstone



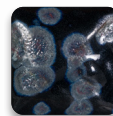
SW-179
Muddy Waters

SW-509 Dark Green Gloss
over
SW-179 Muddy Waters



SW-180
Desert Dusk

SW-509 Dark Green Gloss
over
SW-180 Desert Dusk



SW-181
Night Moth

SW-509 Dark Green Gloss
over
SW-181 Night Moth



SW-401
Light Flux
**shown above over
SW-119 Cinnabar*

SW-509 Dark Green Gloss
over
SW-401 Light Flux



Vases shown are fired to Cone10 on White Stoneware body.

MaycoColors.com

