

Liquid Gold & Lustres



49001 Lemon Gold 10% 5gm



49016 Bright Gold 8% 5gm



49017 Bright Gold 10% 5gm



49018 Bright Gold 12% 5gm



49019 Matt Gold 18% 5gm



49015 Matt Gold 20% 5gm



49020 Matt Silver 5gm



49002 Platinum 5gm



49003 Copper 5gm



49005 Bronze 5gm



49007 Violet 5gm



49008 Blue 5gm



49009 Green 5gm



49004/49014 Iris (Mother of Pearl) 5 / 25gm



49012 Yellow 5gm



49013 Amber 5gm



49011 Orange 5gm



49006 Red 5gm



49010 Black 5gm

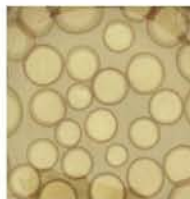


49500 Lustre Thinners 25gm

Galaxy Lustres



49151
Galaxy Yellow
10gm



49152
Galaxy Gold
10gm



49153
Galaxy Violet
10gm



49154
Galaxy Black
10gm



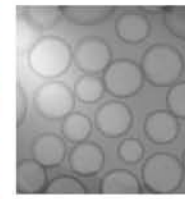
49155
Galaxy Orange
10gm



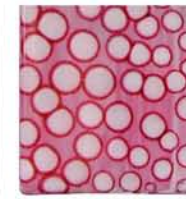
49156
Galaxy Blue
10gm



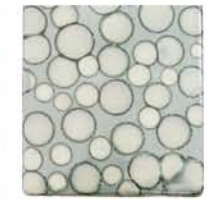
49157
Galaxy Brown
10gm



49158
Galaxy Iris (Mother
of Pearl) 10gm



49159
Galaxy Red
10gm



49160
Galaxy Green
10gm

See over for instructions for use ↻

Instructions for use

Liquid Gold & Lustres

These liquid golds and lustres have dissolved metals as their essential component. They are mainly applied by brush on porcelain, glass or ceramic objects and are always applied to already fired and glazed objects. Before firing, the objects must be left to dry for a few hours in a warm, dust-free place.

Recommended firing temperatures are:

Ceramics: 690°C - 700°C, Orton cone SSB 018

Porcelain: 750°C - 815°C, Orton cone SSB 017 - 015

Glass: 500°C - 600°C, Orton cone SSB 022 - 021

How to apply and use

These products are ready-to-use and are generally of a gluey, dark brown liquid aspect. Use a smooth brush. The pieces to be decorated must be well-cleaned and bone dry. Gold, platinum and some lustres like copper and bronze do not need to be diluted. The brush must neither be too heavily-laden nor too little-laden and the layer applied must be uniform and fine. Too thick a layer causes burning or clouding during the firing. The other lustres can be diluted with an appropriate thinner at more or less 10%. **NOTE The Mother of Pearl Iris lustre needs to be diluted at 15% at least:** It burns more easily than the others if applied in thick layers. Burnt Iris results in a white powder and does not adhere. Precision scales are recommended when diluting in order to maintain the same fluidity and shade of colour.

Galaxy Lustres

To obtain the “Galaxy” effect, apply an even coat of product on the piece to be decorated. Then, with a pointed brush, loaded with the same product, stipple the coat with soft strokes. Circular spots will soon appear on the surface. This effect will be extended and with fuzzy edges if the application is made on wet coat. It will appear smaller and with sharp edges if coat is well dried. Wait for the decoration to dry completely before firing. These products can be also applied using an airbrush for the application of the first coat, but due to the high volatility of product, the effect will be reduced.

Please note that the information provided is for guidance only. Different application methods and different firing conditions will affect results.

NOTE: Before using these products on a large scale, COLOROBRIA strongly recommend a preliminary test.