



---

# STONEWARE

---

Classic | Matte | Texture | Crystal | Wash | Flux



# NEW STONEWARE GLAZES 2021

## MATTE



SW-185  
Rainforest



SW-186  
Azurite



SW-187  
Himalayan Salt



SW-188  
Landslide

## CRYSTAL



SW-189  
Cenote



Dinnerware Safe

All Mayco Stoneware glazes are dinnerware safe when used according to manufacturer's directions, except where noted by the "Not Dinnerware Safe" icon. This may be due to surface durability or texture of fired surface.

# STONEWARE CLASSIC

Stoneware glazes offer the depth, sophistication and reliability to artists working from mid-range to high-fire temperatures. Many glazes will break over textures, revealing secondary colors and shades. The choice of clay body, thickness of glaze application, firing process and temperature will affect the fired results.



SW-180  
Desert Dusk  
over  
SW-128  
Cordova



SW-250  
White Opal



SW-169  
Frosted Lemon



SW-168  
Coral Sands



SW-205  
Coral



SW-113  
Speckled Plum



SW-119  
Cinnabar



SW-128  
Cordova



SW-177  
Raspberry Mist



SW-251  
Pink Opal



SW-183  
Oxblood



SW-143  
Abalone



SW-165  
Lavender Mist



SW-134  
Eggplant



SW-125  
Purple Mint



SW-255  
Gray Opal



SW-166  
Norse Blue



SW-211  
Glacier Blue



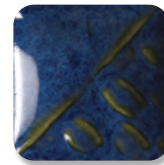
SW-252  
Blue Opal



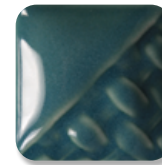
SW-101  
Stoned Denim



SW-123  
Sapphire



SW-100  
Blue Surf



SW-212  
Peacock



SW-201  
Turquoise



SW-167  
Sand & Sea



SW-253  
Green Opal



## CLASSIC & MATTE TIPS

- Mayco glazes are user-friendly in application, layering and firing.
- Used alone, stoneware glazes produce beautiful color variations; one coat will allow the clay body to show through the glaze and two to three coats deepen the color.
- SW-136 Weathered Blue, SW-137 Storm Gray, and SW-138 Lemon Meringue are unique glazes that change in appearance with number of glaze coats. One coat will display more color while additional coats will increase mottling and white variegation.



SW-166 Norse Blue over SW-168 Coral Sands

# STONEWARE MATTE

Choose from solid shades to those that create interesting color variation as they move and break. Application thickness is key to making mattes work for you.



# STONEWARE CRYSTAL



SW-115  
Midnight Rain



SW-116  
Robin's Egg



SW-117  
Honeycomb



SW-118  
Sea Salt



SW-146  
Aurora Green



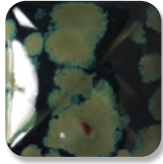
SW-147  
Moonscape



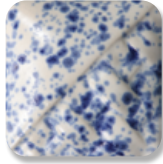
SW-148  
Lime Shower



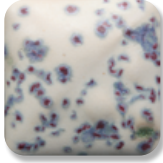
SW-150  
Celadon Bloom



SW-151  
Olive Float



SW-152  
Blue Splatterware



SW-153  
Indigo Rain



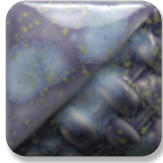
SW-154  
Shipwreck



SW-155  
Winter Wood



SW-156  
Galaxy



SW-170  
Blue Hydrangea



SW-171  
Enchanted Forest



SW-176  
Sandstone



SW-179  
Muddy Waters



SW-180  
Desert Dusk



SW-181  
Night Moth



SW-189  
Cenote

## CRYSTAL TIPS



- Crystal glazes are designed to expand upon the surface with dazzling bursts of color.
- Crystals will settle to the bottom of the jar and will need thorough mixing prior to initial use and in between each coat.
- Apply two to three coats using a fan brush. While the glaze is wet, use your brush to redistribute crystals to achieve balanced coverage. Over-application of the crystals can cause pinholing or running.
- Crystals can create movement. Avoid having a heavy concentration of crystals near the bottom of your piece.

# STONEWARE GLOSS



Stoneware Gloss glazes can be used in design, all over coverage and are the ideal product for intermixability at mid-range temperatures. The integrity of your design will remain unchanged as these glazes are incredibly stable and will not move or combine with surrounding colors.



SW-501  
White Gloss



SW-502  
Yellow Gloss



SW-503  
Orange Gloss



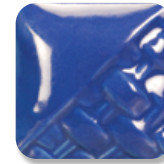
SW-504  
Red Gloss



SW-505  
Purple Gloss



SW-506  
Bright Blue Gloss



SW-510  
Blue Gloss



SW-507  
Bright Green Gloss



SW-509  
Dark Green Gloss



SW-508  
Black Gloss

# STONEWARE CLEAR



SW-001  
Clear



SW-002  
Matte Clear



SW-004  
Zinc-Free Clear

Mayco Stoneware Clear Glazes will preserve and enhance the surface of your work.

## CLEAR TIPS

- **SW-001 Clear** is formulated to reach high fire temperatures up to cone 10.
- **SW-002 Matte Clear** fires to a satin matte finish at cone 5/6 and will become more satin at cone 10.
- **SW-004 Zinc-Free Clear** is designed for use on products containing chrome-based pigments to ensure that you will get a smooth and clear surface.

# STONEWARE SPECIALTY

Stoneware specialty glazes were developed for special effects and surface depth.



## CRACKLE TIPS

SW-149 Crackle White and SW-003 Crackle Matte Clear are developed for mid-range firing temperatures where a fine crackle pattern will develop with 2-3 coats. To highlight the crackle pattern, after firing, wipe black acrylic or ink over the ware and wipe off, allowing the ink to fill the cracks.

## MUDCRACK TIPS

SW-403 White Mudcrack and SW-404 Black Mudcrack were developed to create a highly-textured raised and cracked surface. The thicker the application, the more textured the surface. Mudcrack can be directly applied to bisqueware or in combination with other mid-range glazes.



SW-403 White Mudcrack over SW-505 Purple Gloss

## MAGMA TIPS

SW-405 Light Magma and SW-406 Dark Magma were developed to create a rough, cratered surface. The thicker the application, the more textured the surface will be. Magma can be directly applied to bisqueware or in combination with other mid-range glazes.

Visit [MaycoColors.com](http://MaycoColors.com) for additional application details and tips.

## WORKING WITH FLUX

Light Flux and Dark Flux are flowing glazes intended for use with other stoneware glazes to enhance movement, promote reactions and add interesting effects. Apply 2-3 coats under or over another mid-range glaze to bring about "hidden colors".



## CONE 6 RESULTS



## CONE 10 RESULTS



Technique was achieved by brushing on two (2) layers of base glaze. Then apply two (2) layers of top glaze, letting glazes dry between coats.

# WASHES

Mayco Washes are a multi-purpose product with limitless possibilities. These washes can be used alone for staining techniques or with any glaze from low-fire (cone 05/06), mid-range (cone 5/6), and up to cone 10. They are beautiful in oxidation or reduction and can expand the glaze palette for an artist or teacher. Mayco Stoneware Washes are highly concentrated metallic glaze colorants formulated for ease of use and versatility. Washes are not dinnerware safe unless used in combination with clear or another glaze that creates a sealed and chemically durable finish. 🌱



SW-301  
Iron Wash



SW-302  
Rutile Wash



SW-303  
Manganese Wash



SW-304  
Copper Wash



SW-305  
Cobalt Wash

## WASH TIPS

- Formulated for ease of use and brushability.
- Washes can be applied in a variety of ways, but are often painted into textured areas and wiped away on the higher surface to accentuate the texture.
- Can be fired from cones 06 - 10. Chips shown are fired to cone 6.



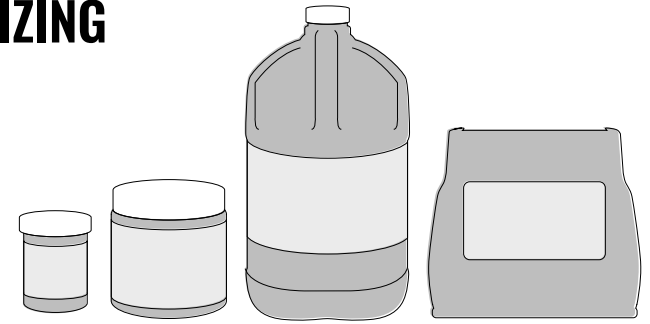
## Get Inspired

Explore ideas, draw inspiration, or choose your next project from our extensive library.

Visit [MaycoColors.com](http://MaycoColors.com) to access our Project Library.



## AVAILABLE SIZING



	4 oz.	Wide mouth pt.	1 gal.	5 lbs. dry
<b>Classic</b>		√		√
<b>Matte</b>		√		√
<b>Crystal</b>		√		√
<b>Gloss</b>		√		√
<b>Clear</b>		√	√	√
<b>Specialty</b>	√ (Flux only)	√		√ (Magma only)
<b>Washes</b>	√			

## Dry Glazes

Use Mayco Stoneware Dry glazes (SD-#) for fast dipping and layering, creating natural flowing effects. Fine and uniform particle size and a thorough dry mixing process make Mayco Stoneware Dry glaze consistency so perfect that sieving is optional. Available in 5 lbs. bags with volume pricing available. Contact your Mayco Distributor for details.

Visit [MaycoColors.com](http://MaycoColors.com) for additional resources.

## Stoneware Glaze Assortment Kits

Mayco Stoneware Glaze Assortment Kits offer a variety of colors, finishes and endless possibilities for glaze combinations. The kits are value priced in sets of six wide mouth pint jars and are perfect for the studio or classroom.

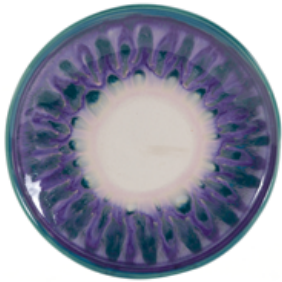
Visit [MaycoColors.com](http://MaycoColors.com) for available Stoneware kits.

# LOW-FIRE GLAZES AT MID-RANGE

Artists can incorporate and combine other Mayco products with Stoneware glazes at mid-range (cone 5/6) temperatures. Cone 6 color performance can be found on the left side of the low-fire glaze label. Visit [MaycoColors.com](http://MaycoColors.com) for more information on low-fire glazes at mid-range.

## Stroke & Coat®

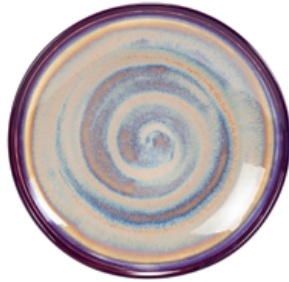
Many Stroke & Coat® glazes perform well at mid-range. Darker colors such as red, orange, yellow, blue and green may darken compared to their cone 06 results. Lighter colors such as tan, purple and pink will fade.



SC-33 Fruit of the Vine and SC-29 Blue Grass trailed under SW-143 Abalone

## Elements™

Many Elements™ and Elements™ Chunkies create beautiful effects when used with stoneware at mid-range. Elements™ will be quite fluid and move during the firing process so keep away from the bottom of the ware.



EL-149 Lavender Flower over SW-110 Oyster and SW-134 Eggplant on the rim

## Jungle Gems™

Jungle Gems™ glazes perform at mid-range for very interesting results. Crystals will have additional movement at higher temperatures and will act more as a blending agent.



CG-992 Mint Chip over SW-144 Lava Rock

## Designer Liner

Designer Liner enables artists to achieve crisp, non-moving linework from cones 06 - 6 temperatures. To ensure sharpness in line quality, use a non-moving translucent or clear glaze over the top of Designer Liner.



SG-401 Black Designer Liner, SW-119 Cinnabar and SW-001 Clear

# STONEWARE GLAZE COMBINATIONS

Artists can achieve incredible finishes with a simple combination of two glazes. Visit [MaycoColors.com](http://MaycoColors.com) for more Stoneware glaze combinations and inspiration.

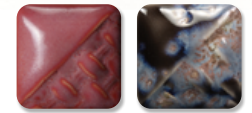
## CONE 6 RESULTS



SW-180 Desert Dusk over SW-112 Tiger's Eye



SW-108 Green Tea over SW-128 Cordovan



SW-177 Raspberry Mist over SW-1546 Galaxy



SW-108 Green Tea over SW-144 Lava Rock



SW-176 Sandstone over SW-168 Coral Sands



SW-123 Sapphire over SW-118 Sea Salt

Technique was achieved by brushing on two (2) layers of base glaze. Then apply two (2) layers of top glaze, letting glazes dry between coats.

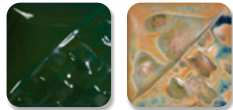
# STONEWARE GLAZE COMBINATIONS

Artists can achieve incredible finishes with a simple combination of two glazes.  
 Visit [MaycoColors.com](http://MaycoColors.com) for more Stoneware glaze combinations and inspiration.

## CONE 10 RESULTS



SW-148 Lime Shower over SW-117 Honeycomb



SW-509 Dark Green Gloss over SW-180 Desert Dusk



SW-156 Galaxy over SW-118 Sea Salt



SW-510 Blue Gloss over SW-146 Aurora Green



SW-168 Coral Sands over SW-113 Speckled Plum



SW-108 Green Tea over SW-174 Leather

## Stoneware Glazes at Cone 10

Mayco Stoneware glazes are intended for use at cone 5/6, but many are also pleasing and stable at cone 10 oxidation, reduction or other alternative atmospheric firing conditions. Always test prior to use.



Jeff Babione

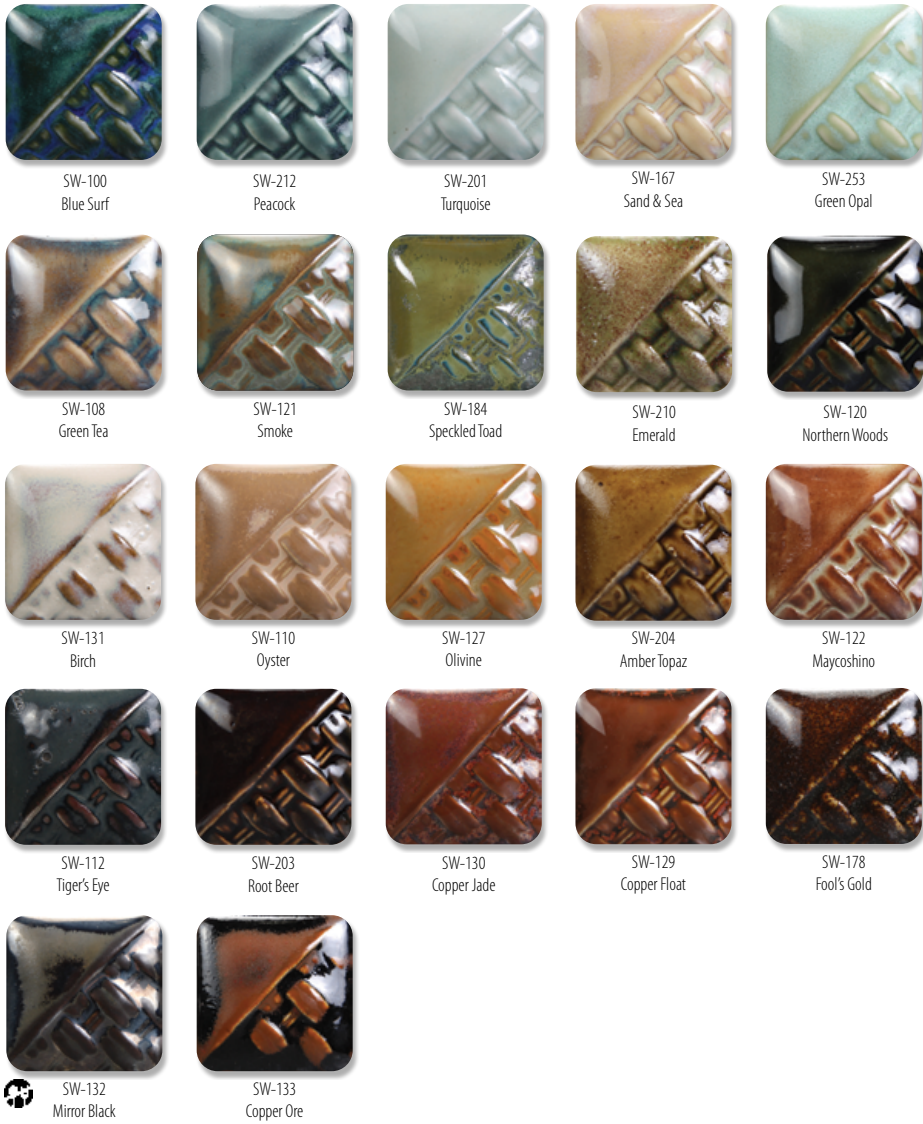
## CONE 10 RESULTS

### STONEWARE CLASSIC



Chips shown have been fired to cone 10 reduction on white stoneware body.





## STONEWARE MATTE



The choice of clay body, thickness of glaze application, firing process and temperature will affect the fired results. Due to variability, we recommend testing prior to application to artwork.



SW-180 Desert Dusk over SW-107 Dunes

# STONEWARE CRYSTAL



SW-115  
Midnight Rain



SW-116  
Robin's Egg



SW-117  
Honeycomb



SW-118  
Sea Salt



SW-146  
Aurora Green



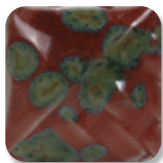
SW-147  
Moonscape



SW-148  
Lime Shower



SW-150  
Celadon Bloom



SW-151  
Olive Float



SW-152  
Blue Splatterware



SW-153  
Indigo Rain



SW-154  
Shipwreck



SW-155  
Winter Wood



SW-156  
Galaxy



SW-170  
Blue Hydrangea



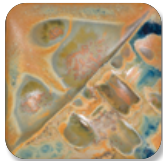
SW-171  
Enchanted Forest



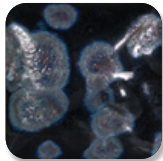
SW-176  
Sandstone



SW-179  
Muddy Waters



SW-180  
Desert Dusk



SW-181  
Night Moth



SW-189  
Cenote

# STONEWARE GLOSS



SW-501  
White Gloss



SW-502  
Yellow Gloss



SW-503  
Orange Gloss



SW-504  
Red Gloss



SW-505  
Purple Gloss



SW-506  
Bright Blue Gloss



SW-510  
Blue Gloss



SW-507  
Bright Green Gloss



SW-509  
Dark Green Gloss



SW-508  
Black Gloss

# STONEWARE CLEAR



SW-001  
Clear



SW-002  
Matte Clear



SW-004  
Zinc-Free Clear

# STONEWARE SPECIALTY



SW-149  
Crackle White



SW-003  
Crackle Matte Clear



SW-403  
White Mudcrack



SW-404  
Black Mudcrack



SW-405  
Light Magma



SW-406  
Dark Magma



SW-401  
Light Flux

(over SW-119 Cinnabar)



SW-402  
Dark Flux

(over SW-119 Cinnabar)

# WASHES



SW-301  
Iron Wash



SW-302  
Rutile Wash



SW-303  
Manganese Wash



SW-304  
Copper Wash



SW-305  
Cobalt Wash

Washes are Not Dinnerware Safe when used alone.

# Stroke & Coat®

The Creative Choice

An intermixable, versatile glaze  
perfect for the classroom or studio.



# Jungle Gems™ Crystal Glaze

Featuring crystals that bloom into  
unique and beautiful surfaces. Try in  
combination with other glazes.



# FUNDAMENTALS® Underglaze

Vibrant color, highly versatile and  
a staple for ceramic artists.



Expand your palette  
with these glaze lines and  
other products from Mayco.

**MC-447E** 3/21

Mayco Colors  
Coloramics, LLC  
4077 Weaver Court South  
Hilliard, OH 43026

614-876-1171  
info@maycocolors.com  
MaycoColors.com

